

# ADT: Comment Form Version 1.0

## Requirements Specification

<b>Author</b>	Janet
<b>Version</b>	1.0
<b>Printed</b>	2001-10-22 12:33 PM

---

## Document Revisions

Revisions on this document should be recorded in the table below:

	<b>Date</b>	<b>Description</b>	<b>Author</b>
1	2001-10-22	First Draft	Janet
2	10 September 2001	First Edit;	Josh
3	9 October 2001	Add Params, Screenshots, Views	Josh
4			

<b>1 Introduction</b>	<b>4</b>	
1.1 Purpose of this document		4
1.2 Scope of this document		4
1.3 Overview		4
1.4 Business Context		4
<b>2 General Description</b>	<b>4</b>	
2.1 Product Functions		4
2.2 General Constraints		4
<b>3 Functional Requirements</b>	<b>8</b>	
3.1 Comment Form Application		8
3.1.1 <i>Description</i> .....		8
3.1.2 <i>Risks and Dependencies</i> .....		9
<b>4 Database Design</b>	<b>10</b>	
4.1 Description		10
4.2 Communications Interfaces		10
<b>5 Other non-functional attributes</b>	<b>10</b>	
5.1 Reliability		10
5.2 Maintainability		10
5.3 Portability		10
5.4 Extensibility		10
5.5 Reusability		10
5.6 Serviceability		10

# 1 Introduction

## 1.1 Purpose of this document

The purpose of this document is to specify the functional and system specification of the Comment Form application. So as to provide a road-map through which the implementation of the application will be developed and where applicable, will also contain information detailing technical design constraints and assumptions.

## 1.2 Scope of this document

This specification covers the functional specifications of the Comment Form application. This specification does not extend to third party or infrastructure components.

## 1.3 Overview

The basic requirements summary build-in for the Comment Form application:

- To allow any user to send comments.
- To allow only the administrator/authorized person to receive and read the comments from users.

## 1.4 Business Context

Comment Form is an application designed for users to send their comments to the website. The generic version is open source for distribution. Anyone may take advantage of the powerful eXtropa Perl ADT. Improvements will be made incrementally as bug reports come in and suggestions are made. The generic Comment Form will ultimately benefit both the company and our users.

# 2 General Description

## 2.1 Product Functions

The general functionality of the Comment Form application is to allow users to send their comments to the administrator of the website and to allow the administrator to read the comments from users. The application generates a dynamic page depending on the entered information and the setup preferences.

## 2.2 General Constraints

The application will be written in Perl and the data files are stored in a common flatfile system (ASCII File). This will slow down in terms of searching for information if there is a presence of huge database.

The application is also able to interface with relational databases should the administrator desire it.

**Bold Params** indicate Section Headings. *Italic Params* are objects.

Indented Params are configurable variables.

Grayed out or missing items are not required or not available in the default configuration.

Param	Default configuration	Notes
<b>Language</b>	Perl	
<b>Session Setup</b>		No Sessions required
<b>Authentication Setup</b>		There is no Authentication by Default
<b>Authentication Manager Setup</b>		There is no authentication in Default Configuration
<b>Data Handler Setup</b>		How data is handled
<i>Add Form DHM Config</i>		
Type	CGI	
CGI Object	\$CGI	
Data Handlers	Email, Exists, HTML, String	
Field Mappings	Fname, lname, email, comments	
<b>Datasource Setup</b>		Configure the database and fields displayed
Field Names	Record_id, fname, lname, email, comments, date_time_posted	Corresponds to default extropia database
<i>Sample Default Widget Definitions</i>		Configure field types for TTML
Display Name	Country	Name that appears in the browser
Type	Textfield, textarea	
Name	Fname	Internal field name
Size	30	Display size in characters
Maxlength	80	Maximum number of characters permitted
Rows	6	Initial height of textarea
Cols	30	Initial width of textarea
Wrap	VIRTUAL	Wrapping of text in textarea
<i>Basic Datasource Config Params</i>		Configure datasource
Type	File	
File	\$APP_DATAFILES_DIRECTORY/\$APP_NAME.dat	
Field Delimiter	(pipe)	
Comment Prefix	#	Ignore lines starting with #
Create File if None Exists	On	
Field Names	\@DATASOURCE_FIELD_NAMES	
Key Fields	['record_id']	Not required if key is not used
Field Types	Record_id => 'Autoincrement'	Specify a specific kind of field
<b>Mailer Setup</b>		Required for regular

		email. Not the same as Auth Mailer
<b>Mail Config Params</b>		
Type	Sendmail	
<b>Submit Event Send Admin</b>		
From	\$CGI->param('email')	Tells Admin of additions
To	you@yourdomain.com	
Reply To	you@yourdomain.com	
Subject	Comments Addition	
<b>Submit Event Send User</b>		
From	you@yourdomain.com	Thanks the user
To	\$CGI->param('email')	
Reply To	you@yourdomain.com	
Subject	Thank you for your comments	
<b>Logging Setup</b>		
<b>View Setup</b>		
		No Logging in Default Views to use, display, and defaults
<b>Valid Views</b>	FormView, ConfirmationView, ThankYouView, CSSView	The program cannot display views that are not available here.
<b>View Display Params</b>		
Application Logo	logo.gif	Defaults for Views
Application Logo Height	40	
Application Logo Width	353	
Application Logo ALT	CommentForm Demo	
Color for Even Rows	E5E5E5	
Color for Odd Rows	FFFFFF	
Display Fields	category, fname, lname, phone, email, comments, address1, address2, city, state, zip, country, company_name, title, department, fax, mobile, url,	
Table BG Color 1	6699CC	
Table BG Color 2	E5E5E5	
Table BG Font Color1	BLACK	
Table BG Font Color2	BLACK	
<b>Encrypt Setup</b>		
Type	Crypt	Allows encryption
<b>Filter Setup</b>		
<b>HTMLIZE Filter</b>		
Type	HTMLize	
Convert Double Linebreak to P	On	
Convert Linebreak to BR	On	
<b>Charset Filter</b>		
Type	CharSet	
<b>Embed Filter</b>		
Type	Embed	
Enable	Off	
<b>Action/Workflow Setup</b>		
<b>Action Handler List</b>	Default::DisplayCSSViewAction Default::CheckForLogicalConfigurationErrorsAction	User should not need to modify. Note that these are different than most

	Default::SimpleForm::ProcessFormAction Default::SimpleForm::DisplayConfirmationAction Default::SimpleForm::DisplaySimpleFormAction	Apps.
<i>Action Handler Action Params</i>		
Action Handler List	\@ACTION_HANDLER_LIST	
Add Acknowledgment View Name	ThankYouView	
Admin Email Body View	AdminEmailBodyView	
Allow Additions Flag	On	
CGI Object	\$CGI	
Confirmation View Name	ConfirmationView	
CSS View URL	\$CSS_VIEW_URL	For speed, change CSS URL to a location outside the CGI directory.
CSS View Name	CSSView	
Datasource Config Params	\@DATASOURCE_CONFIG_PARAMS	
Display Acknowledgment	On	
Display Confirmation	On	
FormView Name	FormView	Remove or change numbers as desired. This appears under Options.
Hidden Admin Fields View	HiddenAdminFieldsView	
Log Form Submission	On	
Mail Config Params	\@MAIL_CONFIG_PARAMS	
Mail Send Params	\@MAIL_SEND_PARAMS	
Send Email to Admin	On	
Send Email to User	On	
Templates Cache Directory	\$TEMPLATES_CACHE_DIRECTORY	
Valid Views	\@VALID_VIEWS	
View Display Params	\@VIEW_DISPLAY_PARAMS	
View Filters Config Params	\@VIEW_FILTERS_CONFIG_PARAMS	
View Loader	\$VIEW_LOADER	
Simple Search String	\$CGI->param('simple_search_string')    ""	
First Record on Page	\$CGI->param('first_record_to_display')    0	
Last Record on Page	\$CGI->param('last_record_to_display')    "0"	
Page Top View	PageTopView	
Page Bottom View	PageBottomView	
Key Field	record_id	Primary key in database
URL Encoded Admin Fields View	URLEncodedAdminFieldsView	
User Email Body View	UserEmailBodyView	

## 3 Functional Requirements

### 3.1 Comment Form Application

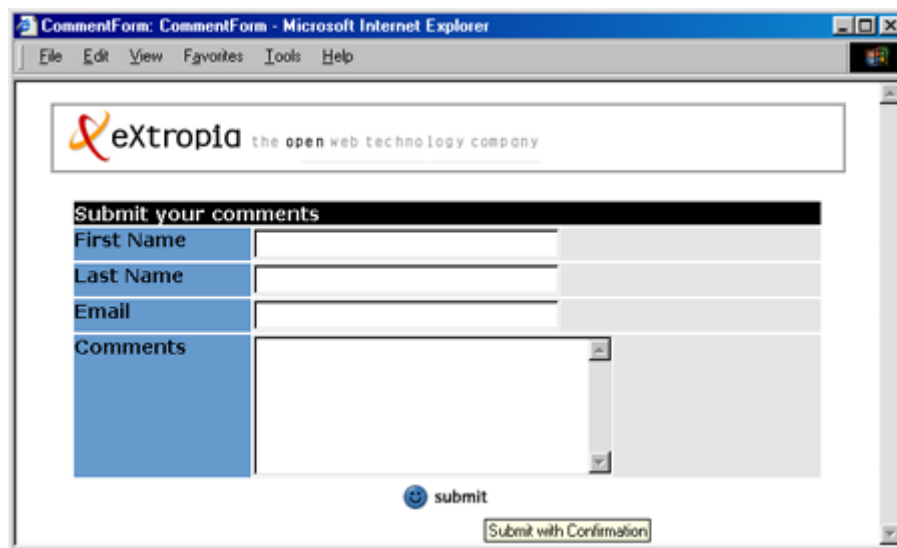
#### 3.1.1 Description

##### Authentication Definition Views

There is no authentication in the Default configuration.

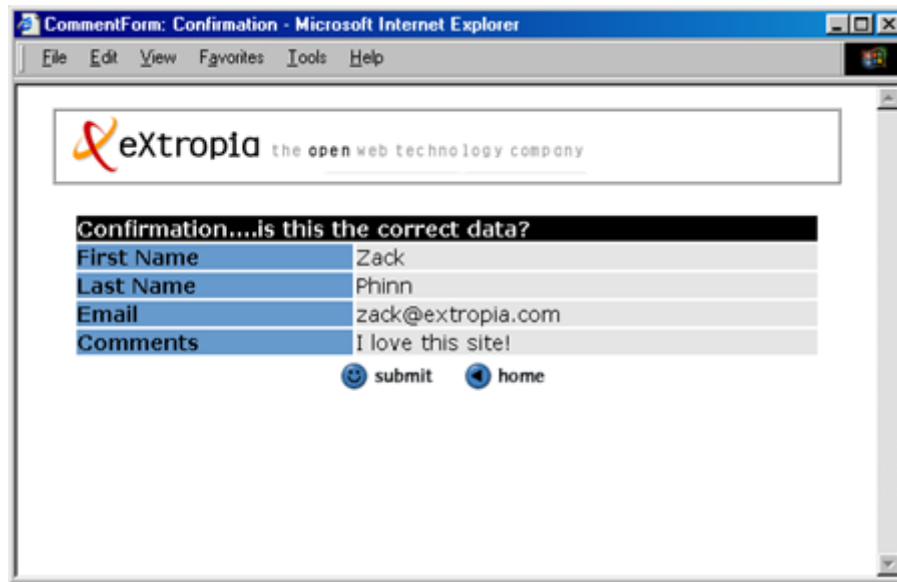
##### Application Specific View Definitions

- **Comment Form Submit View** asks the user to fill in his First Name, Last Name, Email and Comments.

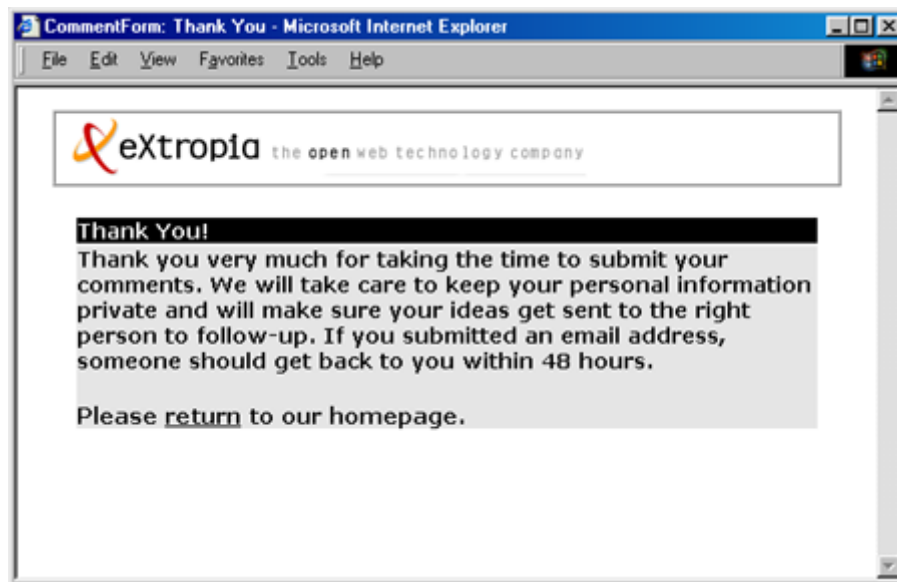


The screenshot shows a web browser window titled "CommentForm: CommentForm - Microsoft Internet Explorer". The browser's address bar and menu bar are visible. The main content area displays the "extropia" logo and tagline "the open web technology company". Below the logo is a section titled "Submit your comments" with a blue header. This section contains four input fields: "First Name", "Last Name", "Email", and "Comments". The "Comments" field is a larger text area with a vertical scrollbar. At the bottom of the form is a "submit" button with a smiley face icon and a "Submit with Confirmation" checkbox.

- **Comment Form Confirmation View** allows users to confirm their submission.



- **Comment Form Acknowledgement Page** confirms a successful submission. It also has a link back to Comment Form Basic View.



### Common Features Definitions

There are no common features in the Default configuration.

## 3.1.2 Risks and Dependencies

## 4 Database Design

### 4.1 Description

The data of the application will be stored in a flat file. Each data fields of a record will be separated by '|'.

Field Name	Description	Data Type
record_id	Record value	Auto incremental numeric value
fname	First Name	char
lname	Last Name	char
email	Email	char
comments	Comments	char

### 4.2 Communications Interfaces

## 5 Other non-functional attributes

### 5.1 Reliability

Highly reliable in a properly secured environment.

### 5.2 Maintainability

Requires little maintenance. Owners will want to clear out a large flatfile now and then as well as ensure their installation is secure from hackers. Users of relational databases will probably not need to clear out their database.

### 5.3 Portability

### 5.4 Extensibility

Information entered is portable to any relational database. The program can easily be switched to a new database with just a few lines of code. The program relies on the eXtropa ADT that divorces form and function.

### 5.5 Reusability

Comment Form is highly reusable. The application can be modified for just about anything!

### 5.6 Serviceability